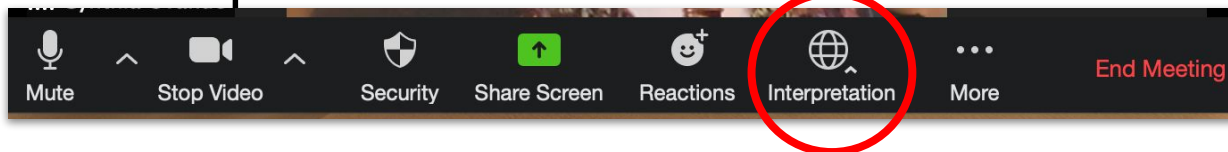
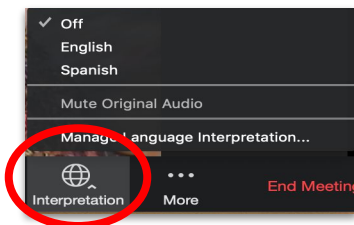


# Interpretation ↔ Interpretación

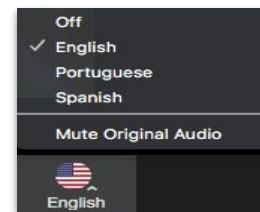
**1** Go to Controls  
*Vaya a los controles*



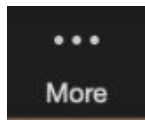
**2** Click  
"Interpretation"  
*Clic en "Interpretación"*



**3** Choose a  
Language  
*Escoja un idioma*

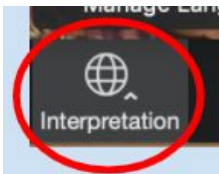


If you do not see the interpretation icon on your phone screen:  
*Si no ve el ícono de interpretación en la pantalla de su teléfono:*



1) Tap on the three dots at the end of the meeting controls.

*Toque sobre los tres puntos al final de los controles para la junta.*



2) Tap on "Language Interpretation" and choose your language.

*Toque sobre "Language Interpretation" y escoja su lenguaje.*

3) Tap on "Mute Original Audio" and then on "Done."

*Toque sobre "Mute Original Audio" y después sobre "Done."*



# District English Learner Advisory Commitee

October 4, 2022

Lemon  
Grove  
SCHOOL DISTRICT



Share your name  
School Site  
and  
Something you love  
about your school

## Purpose & Role

# District English Learner Advisory Committee

### Purpose:

- Provide input and feedback to District Leadership on services & supports for students learning English
  - Implementation of the [Strategic Plan](#) and [LCAP](#)
    - Including:
      - Financial plans
      - Parent Involvement Policy
      - Attendance

### Role:

- Share relevant information with your school site team
- Gather input and feedback for future meeting agendas



## Strategic Plan & LCAP Alignment

# Fostering Educational Equity through Multi-tiered Systems of Support

## Strategic Plan

### PRIORITY ONE

Fostering Student Growth, Leadership & Achievement

### PRIORITY TWO

Fostering Staff Growth, Leadership & Collective Efficacy

### PRIORITY THREE

Fostering School Community and Connectedness

### PRIORITY FOUR

Fostering Operational Systems that Support Effective Schools

## LCAP

### GOAL ONE

Fostering Student and Staff Growth, Leadership & Achievement

### GOAL TWO

Fostering School Community and Connectedness

### GOAL THREE

Fostering Operational Systems that Support Effective Schools

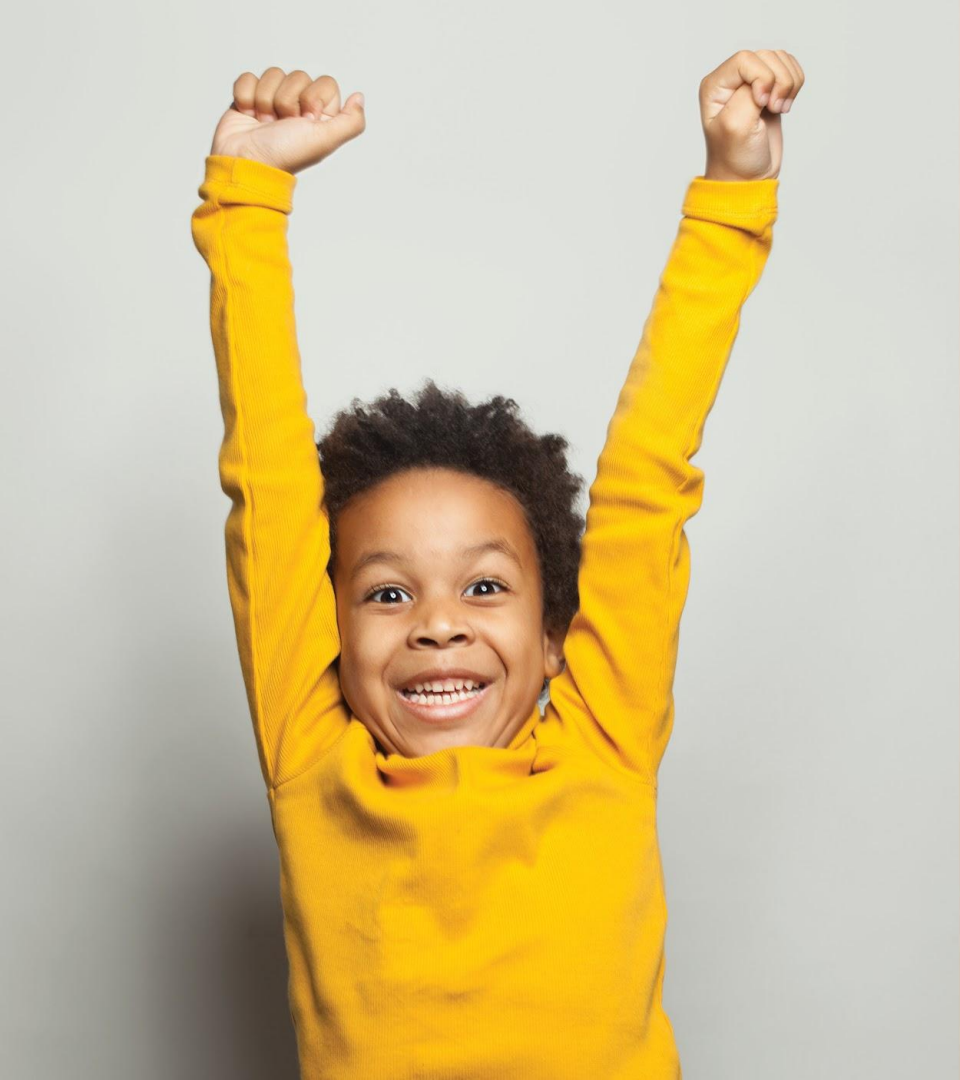
# FOSTERING STUDENT GROWTH, LEADERSHIP & ACHIEVEMENT

- Adopt & implement culturally relevant, standards-based curriculum
- Ensure Effective Data Analysis & Improvement for Equity
  - *Develop an assessment continuum with identified lead & lag metrics and monitor the performance of all students as well as targeted student groups (AA, EL, Sped)*
- Implement culturally relevant & engaging lesson planning & delivery
  - *Anti-racist instructional practices that affirm Black, Latinx, Indigenous, Asian & students of color*
  - *Inclusive practices & placement for students in Special Education*
  - *Inclusive, linguistically sustaining practices & programs for developing multilinguals*
- Provide relevant, effective professional development for all instructional staff
  - *Certificated & classified professional learning opportunities*



# FOSTERING OPERATIONAL SYSTEMS THAT SUPPORT EFFECTIVE SCHOOLS

- Develop School Site Facilities Plans with processes for school site leadership to identify facilities-related priorities and improvements. Develop an equitable method for prioritizing operational and facilities needs district wide.
- Work with school leaders to utilize technology systems for tracking and addressing instructional goals to support the 21st century learner.
- Coach school leaders on developing, interpreting and monitoring school site budgets. Provide support and advice on how to link school site budget allocation decisions to District Strategic Priorities.
- Transition 80% of student meal options to include fresh vegetables and fruits, freshly prepared meals, and exceed minimum USDA nutrition requirements whenever possible.



# DELAC Updates

- Expanded Learning Program
  - [After school music program](#)
- Free Meals for All
- Early Childhood Education Center Tour



Imagine the Possibilities

# Expanded Learning Opportunities Program (ELO-P)





## Program Requirements

- Offer all unduplicated pupils access to comprehensive before and/or after school and intersessional expanded learning opportunities
  - 9 hour day
  - 30 days of intersession
  - Snacks/meals
- Support all unduplicated pupils in TK-6 before using funding for other students/grade levels

# Interession Student Opportunities



- Offer full-day programs during:
  - Fall break
  - Spring break
  - Summer break

*Programming would consist of academic and enrichment opportunities, nutrition, and other developmentally appropriate activities*

# Music Enrichment

## Music Implementation Timeline

### September

- Interest assemblies at every site

### October

- Instrument selection & Enrollment
- Family Orientation via Zoom on October 3
- Classes begin week of October 17
- Weekly Class Meetings- 2 hours
  - 1st Hour- Group Instruction Lesson
  - 2nd Hour- Whole Group Ensemble Lesson



A decorative background on the left side of the slide features a grid of orange slices. The slices are arranged in four rows and three columns, set against a bright yellow background. Each slice is cut horizontally, showing the internal segments and the white pith. The lighting is bright, creating a fresh and vibrant feel.

Great News!

# Free Meals for All!

[Family Flyer](#) (English)

[Family Flyer](#) (Spanish)

[Income form](#) (English)

[Income form](#) (Spanish)



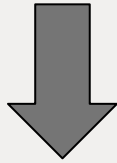
# **EARLY CHILDHOOD EDUCATION CENTER**

**Lemon Grove School District**

# ECE Palm Campus



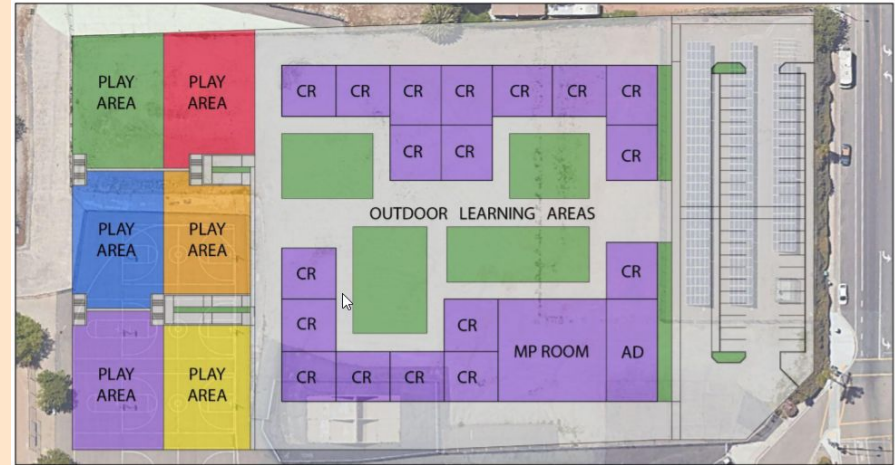
# State Implementation Timeline



<u>2021-22</u>	<u>2022-23</u>	<u>2023-24</u>	<u>2024-25</u>	<u>2025-26</u>
<p>Prior TK eligibility: Turn 5 between September 2 &amp; December 2</p>	<p>TK eligibility: Turn 5 between September 2 &amp; February 2, inclusive</p>	<p>TK eligibility: Turn 5 between September 2 &amp; April 2, inclusive</p>	<p>TK eligibility: Turn 5 between September 2 &amp; June 2, inclusive</p>	<p>TK eligibility: Turn 5 between September 2 &amp; September 1</p>
<p>Ratios: Not specified Class size: 24</p>	<p>Ratios: 1:12 Class size: 24</p>	<p>Ratios: 1:10 Class size: 24</p>	<p>Ratios: 1:10 Class size: 24</p>	<p>Ratios: 1:10 Class size: 24</p>
<p><b>Planning year</b></p> <ul style="list-style-type: none"><li>Funding available to districts for planning</li><li>TK Plan due to CDE June 2022</li></ul>	<p><b>Implementation Year</b></p> <ul style="list-style-type: none"><li>All TK at Palm Campus</li><li>Continue planning for new facility</li></ul>			<p><b>Full Implementation</b></p>

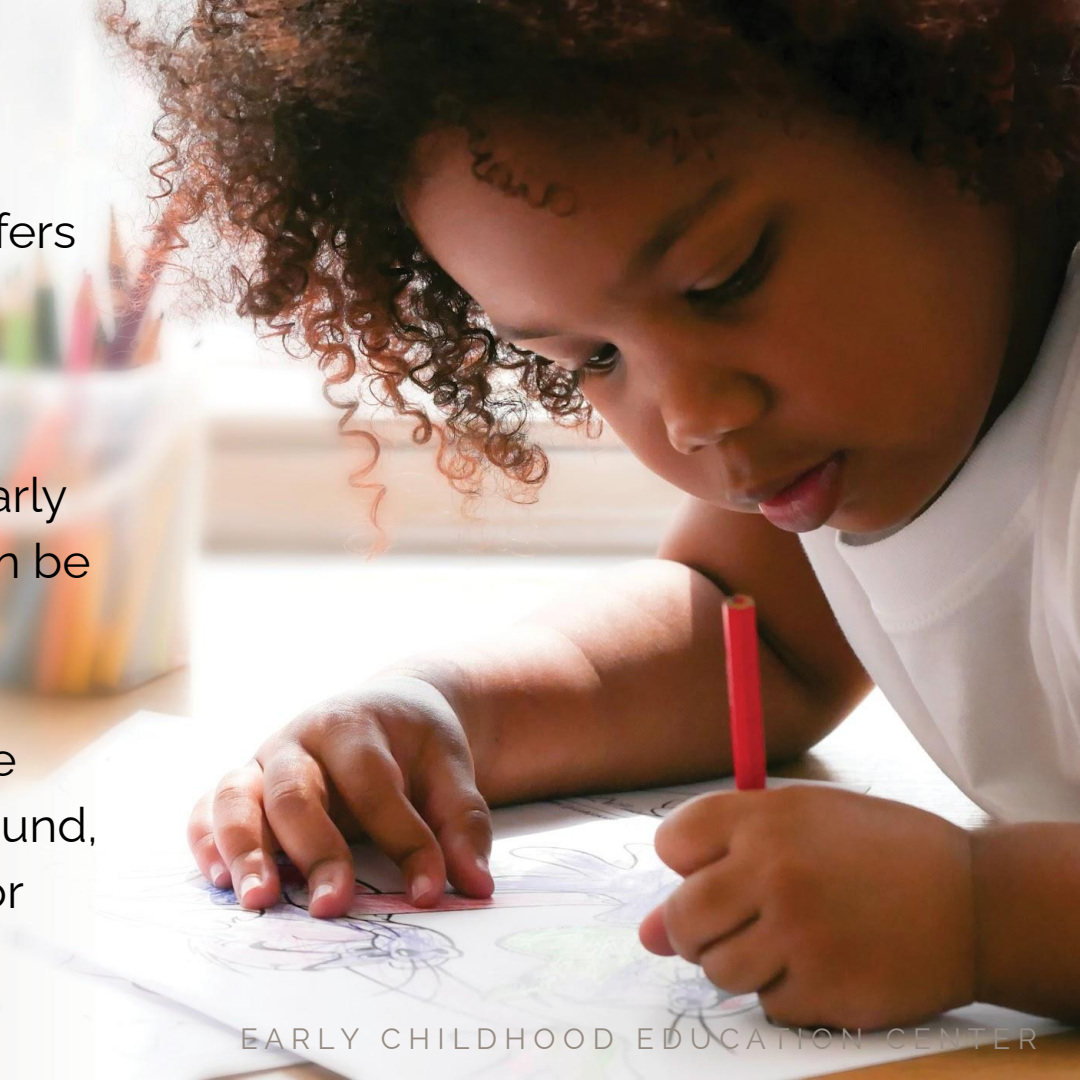


# ECEC Facility



## Universal PreKindergarten (UPK)

Universal PreKindergarten (UPK): refers to the continuum of high-quality programs, including TK, state preschool, Head Start, general childcare, and community-based early learning and care providers, that can be layered and wrapped to create rich early learning opportunities for all children during the two years before kindergarten, regardless of background, race, zip code, immigration status, or income level.



# ECE Program

## CSPP

California State Preschool Program

- Serves three-and four year old children from low-income families earning (family of 3 < \$78,138)
- 1:8 adult to child ratio
- Receive state funding
- Parents can choose to send child here if eligible for TK

## TK

Transitional Kindergarten

- Serve all 4-year-old children by 2025-26
- Only operating via school districts
- 1:12 adult to child ratios (1:10 in 2023-24)
- Additional education credentialing requirements for teachers
- Parents can choose to send child here if eligible for CSPP

## Other

Extended Learning Program, Head Start; community based organizations (CBOs); family child care; family; friend, and neighbor providers, etc

# Questions?

What excites you about the new  
Early Childhood Education Center?

What questions do you have?



## Strategic Plan & LCAP Alignment

# Fostering Educational Equity through Multi-tiered Systems of Support

## Strategic Plan

### PRIORITY ONE

Fostering Student Growth, Leadership & Achievement

### PRIORITY TWO

Fostering Staff Growth, Leadership & Collective Efficacy

### PRIORITY THREE

Fostering School Community and Connectedness

### PRIORITY FOUR

Fostering Operational Systems that Support Effective Schools

## LCAP

### GOAL ONE

Fostering Student and Staff Growth, Leadership & Achievement

### GOAL TWO

Fostering School Community and Connectedness

### GOAL THREE

Fostering Operational Systems that Support Effective Schools



Lemon  
Grove  
SCHOOL DISTRICT

Thank you

Gracias

